



## County College of Morris and Drew University An Honors Transfer Partnership

### Upgrade Your Associate's to a Bachelor's with a Seamless Transition.

When you imagine your life after CCM, which do you see: Jumping into the workforce? Or applying to Bachelor's programs?

If you're an Honors student, you have a third option: a seamless transition into Drew University through our Honors Transfer Partnership. Through the Partnership, you also qualify for generous scholarship support, guaranteed to meet your financial need.



#### If You're The Best, We Want You Here

We at the County College of Morris and Drew University want to foster our strongest students with the brightest potential. If you have skills and drive, we want to ensure you have opportunity. That's why we're offering this program to students who meet the following requirements:

- Complete four honors courses at CCM. Upper level math or science courses (if you earned a B or above) can count as honors courses!
- Graduate from CCM with your associate's degree and a cumulative GPA of 3.25 or higher.
- Follow the transfer process outlined on the back.



### Financial Aid

As part of this Partnership, students can qualify for academic and/or need-based aid for up to four semesters of full-time study at Drew University.

#### Merit-Based Scholarships from Drew

1. GPA of 3.75 or higher: A \$25,000 annual Honors Scholarship.
2. GPA of a 3.5 or higher: A \$20,000 annual Presidential Scholarship.
3. GPA of 3.25 or higher: A \$15,000 annual Dean's Scholarship.
4. Phi Theta Kappa membership: An additional \$2,500 annual scholarship.

#### Need-Based Financial Aid

Students who demonstrate financial need will receive grants, loans and work-study to meet their demonstrated financial need, minus an expected student summer earnings contribution.

(Academic scholarships are factored into need-based financial aid packages.)

*Note: Drew's application fee will be waived for students applying through this Partnership.*

## Drew's Honors Transfer Partnership

### We'll Help You Through the Process

If you are interested in the Honors Transfer, attend the special meetings held at CCM each semester so you can speak with the Drew admission and faculty advisors. Representatives from both schools will guide you at each step.

#### Start Right Away

As soon as possible, tell your CCM academic advisor and the Drew admissions representative of your interest and ask them to start you off with courses you will need to qualify.

#### Follow Up Each Semester

Once you start your first honors (or equivalent) class, attend a group discussion with Drew representatives to lay out your courses for timely graduation and a smooth crossover into a Drew bachelor's program.

Group meetings will be announced to all honors students via a message from the honors coordinator at CCM.

#### Ease Into The Drew Curriculum

During your first spring semester at CCM, join the group visiting the Drew campus for an introduction to professors and courses.

During the fall semester of your second year at CCM, you can attend one course at Drew for no charge. A second free course will be available in the spring semester to students who apply to Drew.

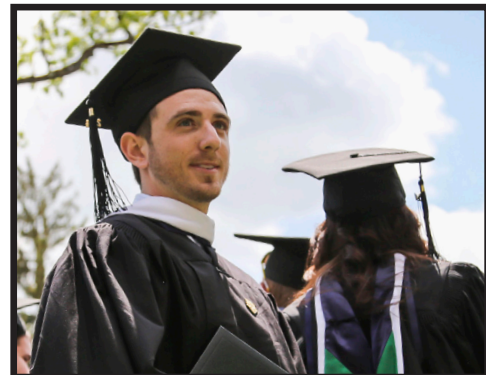
#### Officially Apply

##### If you will receive your associate's degree in May:

1. Turn in your application to Drew by February 1 of your second year at CCM.
2. Receive notification of admission, financial aid and scholarship decisions by April 1.
3. Notify Drew whether you intend to accept their offer by May 1.

##### If you are receiving your associate's degree in December:

1. Turn in your application to Drew by October 1 of your second year at CCM.
2. Receive notification of admission, financial aid and scholarship decisions by December 1.
3. Notify Drew whether you intend to accept their offer by January 1.



### FAQ

**Q.** What class would I be in when I transfer into Drew?

**A.** On transfer, you would be granted junior (5th semester) status.

**Q.** Which upper level math or science courses would count as honors courses?

**A.** Analytical Geometry & Calculus I, Analytical Geometry & Calculus II, Analytical Geometry & Calculus III, Differential Equations, Engineering Physics, or Organic Chemistry.

**Q.** Will I have assistance to adjust to the change from CCM to Drew?

**A.** Absolutely, right from the beginning. After a special orientation session, you will be guided by a faculty or staff mentor as part of a cohort of other honors students.

**Q.** Where can I go for more information?

**A.** Reach out to Sunita Bhargava in the Office of College Admissions at 973-408-3400 and sbhargava@drew.edu.

### Apply

#### Office of Admissions

cadm@drew.edu  
973.408.DREW  
drew.edu/apply

**DECLARE  
YOURSELF**