



June 17, 2022  
Volume 2022/657

### CCM EVENTS

Teen Arts Exhibition and Reception  
Through August 26  
Art Gallery

[Public Safety Visitor's Registration Link](#)



### Further Enhancing Student Success and Operational Efficiency

To further enhance the success of students and ensure institutional stability, CCM has made numerous adjustments to its organizational structure as approved by the Board of Trustees at its May 17 meeting. At CCM, our focus is – and will continue to be – our mission statement, which is student and community focused. In addition to becoming a more effective and efficient institution, these changes will also save the college approximately \$205,000 per year. The following is a summary of changes that are reflective of the reorganization.

The position of Vice President of Student Development & Enrollment Management is being eliminated upon Dr. Bette Simmons' retirement. This large area of the college will be divided amongst three different areas, distributed between Vice President Karen Vanderhoof, Vice President Patrick Enright and Executive Director Melissa Albright.

Vice President Vanderhoof will be reassigned to the position of Executive Vice President of Business & Finance. Harvey Willis will continue as Director of Financial Aid, but his department will report to Vice President Vanderhoof.

Vice President Enright will be reassigned to the position of Senior Vice President of Academic Affairs, Workforce Development & Student Success Services. Katrina Bell is now the Assistant Vice President for Workforce Innovation & Experiential Learning, reporting to Vice President Enright. Jan Caffey will transition to the Dean of Student Success, also reporting to Vice President Enright. These changes will allow Vice President Enright to oversee academic success through both academic affairs, as well as academic services, ensuring that students are successful academically and support services are connected to their experience.

Also effective July 1, Executive Director Melissa Albright will be reassigned as the Vice President of Marketing & Public Relations & Enrollment Management with Pam Marcenaro as Assistant Vice President of Enrollment Management. Effective immediately, Gina Garcia is the Creative Services Manager for Marketing & Public Relations.

In addition to these changes, an Executive Director of Diversity, Equity & Inclusion & Opportunity Services has been added to the organizational chart and the position will soon be posted on the Human Resources jobs website.

Please be reminded that a copy of the college's organizational chart is posted and housed on the CCM website and is available [here](#) for your reference. It should be noted that with these changes there are some office changes that will be occurring. Any changes will be included in an upcoming edition of the CCMemo.



In May, professors with the **Parks Program** brought seven students to Yellowstone National Park. The five-night experience, funded by the Office of Campus Life and Academic Affairs, featured experiential learning and academic lessons seen through an interdisciplinary lens. The seven scholars who took part were Peter Balluffi-Fry, Sophia Giralt, Julia Natoli, Jenna Palazzi, Rachel Scimeca, Noah Sosa and Raizzi Stein. Joining the trip were **Professor Samantha Gigliotti**, Biology & Chemistry; **Dr. Brian Sahotsky**, Art & Design; and **Professor John Soltes**, Communication. They taught the student scholars many lessons, including the impact of artist Thomas Moran and the biological process known as trophic cascading. They were joined one morning by Dr. Shane Doyle (Crow), a Native American Studies scholar. Highlights included visits to the Grand Canyon of Yellowstone, Old Faithful, Lamar Valley and Mammoth Hot Springs.



This past week, Yellowstone National Park and surrounding areas were devastated by historic floods. CCM's Parks Program supports our Yellowstone friends. Parks Program will return in the fall with on-campus programming for students, staff, faculty and the community. Email [parksprogram@ccm.edu](mailto:parksprogram@ccm.edu) for more information.

## Inclusion and Equity in Teaching: Considering Identity and LGBTQ+ in the Languages and Arts

The Commemoration Committee at County College of Morris (CCM) will be holding a virtual session on "Inclusion and Equity in Teaching: Considering Identity and LGBTQ+ in the Languages and Arts" in recognition of June as LGBTQ+ month.

The session takes place Thursday, June 23, from 1 – 2 p.m. on Zoom. Email [commemoration@ccm.edu](mailto:commemoration@ccm.edu) and the link and details will be emailed before the event.

The event will consist of two discussions. First Dr. Megan Biondi, Languages & ESL, will present on "LGBTQ Inclusive Pronouns and Adjective Endings in Spanish." Then Dr. Brian Sahotsky, Art & Design, will present on "How to be an Ally When Viewing Art."

"Professor Biondi will investigate the use of gender-inclusive pronouns and the term Latinx in the Spanish language," says Dr. Yoonha Shin, English & Philosophy, co-chair of the Commemoration Committee. "Although Spanish has traditionally been one of the most machista and least gender inclusive Romance languages, it is also quickly evolving to become more gender-inclusive," says Shin. "The only way to achieve a wider acceptance of gender-inclusive forms and true gender equity in Spanish is to teach these suffixes to students as normal, and legitimate pronouns and noun and adjective endings not as weird, optional or alternate linguistic forms."

She adds, "Professor Sahotsky will present a variety of new discourses in the fields of art production, analysis, viewing and appreciation. Viewers will learn to be an ally by discussing and understanding contemporary developments in the reading of art and visual culture, including queer theory, identity politics, feminist theory, ethnocentrism and other historical perpetrations of 'othering.'"

The Commemoration Committee is an interdisciplinary group at CCM that recognizes and raises awareness and understanding of diverse groups, cultures and histories through events recognizing days or months of remembrance.

## Payroll Stipend Paperwork Deadline



All employee stipend payment/work authorization paperwork for services performed prior to July 1 must be received in Human Resources for approval by July 5 in order to be processed by The Payroll team in July. These payments will be charged to the 2021/2022 budget. Any stipends that are not received by that date will be charged to the new Fiscal Year 2022/2023 budget. Please contact the Payroll Team at [Payroll@ccm.edu](mailto:Payroll@ccm.edu) for any issues concerning this deadline.

## Mileage Rate Changes

Effective July 1, the standard mileage rate for business travel will be 62.5 cents per mile. Any travel done through June 3 will be reimbursed at the current rate of 58.5 center per mile.

## Accounting Year-End Reminder

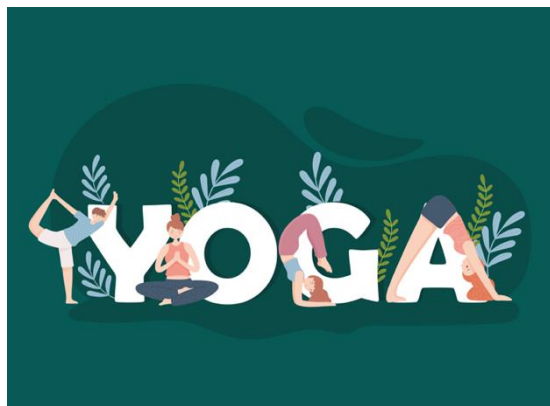
The last day to submit FY 2022 Petty Cash Reimbursements, Expense Reimbursements and Travel Reconciliations is July 8.

## CCM All Access

The latest episode of CCM All Access features Professors Hrvoje Slovinc and Nicole Schwartz from the Department of Photography.

You can watch it at <https://youtu.be/uke5qqSmkf8/>.

## Free CCM Faculty and Staff Summer 2022 Yoga



Professor Trayer Run-Kowzun, Health & Exercise Science, will be offering a free virtual Yoga class for faculty and staff this Summer.

Where: Webex – email [trunkowzun@ccm.edu](mailto:trunkowzun@ccm.edu) to join the class and obtain the link.

When: June 9 to August 18, Thursdays, 5 - 6 p.m.

## The Longo Planetarium Reopens



After being closed for two years due to the pandemic and renovations, the Longo Planetarium is reopening. Kevin Conod has been hired as the college's new Planetarium astronomer. He will begin running shows on the second and fourth Fridays in the evenings and Saturday afternoons in June (June 10, 11 and June 24, 25). Friday shows will run at 7 and 8:15 p.m. Saturday shows will run at 2:30, 4 and 5:30 p.m.

Tickets are \$10 each and can be purchased at the Campus Store and online at <https://bookstore.ccm.edu/longo-planetarium-ccm/>.

## STUDENT SERVICES

The Library  
[In-Person and Remote Service](#)

Online Tutoring Center  
For more information, click [here](#).

## HR CORNER

RETIREMENT CONSULTATIONS WITH NEW JERSEY STATE APPROVED VENDORS  
Save for retirement –  
Receive free, no pressure retirement counseling sessions. Make your appointment today. You do not need to be a member to speak with the representatives.

AIG (formerly VALIC) representatives MaryAnn Bradford and Tom Napier are available for individual appointments.  
Select this link for contact information [County College of Morris Quick Links](#)  
[Click here to schedule a virtual meeting or phone appointment](#)

Equitable representative Marc Sheridan is available at 908-230-2042 or email [Marc.Sheridan@equitable.com](mailto:Marc.Sheridan@equitable.com)

MassMutual (formerly Hartford) representative Kenneth Quarnaccio is available at 848-248-4313 or email [kquarnaccio@gittermanwealth.com](mailto:kquarnaccio@gittermanwealth.com).

MetLife/Brighthouse representative David Sharpe is available at 973-575-3254 or email [dsharpe@financialguide.com](mailto:dsharpe@financialguide.com).

Prudential  
Call 732-428-2314 or email [alicia.smith@prudential.com](mailto:alicia.smith@prudential.com) to make an individual appointment to discuss ABP or DCRP investments.

Contact TIAA's National Contact Center at 800-842-2252 for questions and counseling.

Voya representative John Murray is available to help you with your retirement account. To schedule an appointment call 609-234-3369 or email [johnmurray@voyafa.com](mailto:johnmurray@voyafa.com)

## NOTICES FOR CCMEMO

Email material to Kathleen Brunet at [kbrunet@ccm.edu](mailto:kbrunet@ccm.edu).  
Submissions must be received by 3 p.m. Wednesday.

Looking for past issues of the CCMemo?  
[Find them here.](#)

## SOCIAL MEDIA

Help us communicate all of the good things happening at CCM by liking, sharing or commenting on the college's social media posts and pages.

