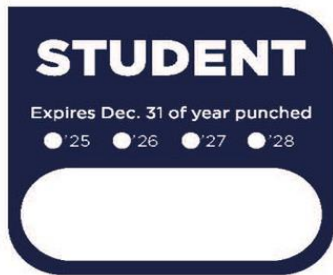


August 12, 2022
Volume 2022/665



New Parking Decals

CCM has developed new parking decals using its new logos and colors and is asking all employees to obtain the updated one. To obtain a parking decal with the new branding for a currently permitted vehicle, employees need to go to the online Public Safety system – link provided below – and complete the Online Permit Registration. In the Notes/Comments area, enter your old decal number. Public Safety will deliver new decals to employees who are easily located. Those who are not easily located should stop by the Public Safety office to pick up their new parking decal.

To manage the flow of decal requests, Public Safety will schedule by department or area, starting with the Business & Finance division as a dry-run and then continue to work through the college.

The Public Safety Online Parking Permit registration link is:

<http://reportproserver.ccm.edu/CESIReportExec/opr/OPRMain.aspx?IsAuth=1&groupid=102&groupname=PUBLIC+SAFETY>

After all submittals have been managed, Public Safety will create a “friendly reminder” flyer that will be placed on the windshields of cars with old decals. It will use this system for a period of time and then switch to contacting employees who still have the old decals.

CCM in the News

[New Two-Year College Data Science, Analytics Programs on the Rise](#)

Dozens of two-year colleges have started data science and analytics programs, with many offering degrees or certificates. To learn more, we reached out to several—including some that participated in the ASA-hosted and National Science Foundation-funded 2018 Two-Year College Data Science Summit—to learn about their program details. Following are reports from the County College of Morris, Wake Tech, Montgomery College, and College of DuPage.

AMSTATNEWS

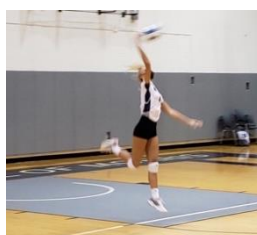
CCM Foundation Annual Golf Classic to Raise Funds to Support Student Athletes



Enjoy a day out on the links with the CCM Foundation and help support students with fulfilling their dreams for a rewarding and satisfying life.

This year’s Annual CCM Foundation Golf Classic takes place Monday, September 19, at the Picatinny Golf Club

Athletic Schedule



Support our Titans by getting out and enjoying a game here on campus. Here is the listing of home games by team for this fall.

Volleyball

Day	Date	Opponent	Time
Wed	Sept. 7	Sussex	6pm
Tues	Sept. 13	Lackawanna	6pm
Mon	Sept. 19	Passaic	6pm
Wed	Sept. 28	RVCC	6pm
Mon	Oct. 3	Bergen	6pm
Sat	Oct. 15	Del Tech	4pm
Sat	Oct. 22	Harcum	1pm

CCM EVENTS

Teen Arts Exhibition and Reception
Through August 26
Art Gallery

[Public Safety Visitor’s Registration Link](#)

STUDENT SERVICES

The Library
[In-Person and Remote Service](#)

Online Tutoring Center
For more information, click [here](#).

HR CORNER

RETIREMENT CONSULTATIONS WITH NEW JERSEY STATE APPROVED VENDORS
Save for retirement –
Receive free, no pressure retirement counseling sessions. Make your appointment today. You do not need to be a member to speak with the representatives.

AIG (formerly VALIC) representative MaryAnn Bradford is available for individual appointments. Select this link to schedule an appointment [Click here to schedule a virtual meeting or phone appointment](#)

Empower (formerly MassMutual/Hartford) representative Kenneth Quarnaccio is available for individual appointments, contact him at 848-248-4313 or by email kquarnaccio@gittermanwealth.com.

Empower (formerly Prudential) representative Raymond Allocco is available for individual appointments for the ABP or the DCRP plans, contact him at 973-908-9619 or by email Raymond.allocco@empower.com.

Equitable representative Marc Sheridan is available for individual appointments, contact him at 908-230-2042 or by email Marc.Sheridan@equitable.com

MetLife/Brighthouse representative David Sharpe is available for individual appointments, contact him at 973-575-3254 or by email dsharpe@financialguide.com.

TIAA: Schedule a virtual appointment here www.tiaa.org/schedulenow or call 855-728-8422 to speak with an individual.

Voya representative John Murray is available for individual appointments, contact him at 609-234-3369 or by email johnmurray@voyafa.com.

NOTICES FOR CCMEMO

Email material to Kathleen Brunet at kbrunet@ccm.edu.
Submissions must be received by 3 p.m. Wednesday.

Looking for past issues of the CCMemo?
[Find them here.](#)

in Dover and includes lunch and an extended cocktail hour. All participants will receive a special Golfer Gift and there will be a Hole in One Car and Prize Contest. Raffle prizes also will be given out during the evening program. The cost is \$175 per player. The outing raises funds for the college's scholarship programs and this year is focusing on supporting student athletes and the college's athletic programs.

Picatinny is an exclusive, membership-only facility, considered to be the most respected, perfectly balanced course in New Jersey.

"We're thrilled to offer golfers this opportunity to experience and play on this top-notch, picturesque course in northern New Jersey," says Katie Olsen, executive director of the CCM Foundation. "Players will discover why this course is so well respected for its toughness, fairness and excellent greens."

The day begins with registration at 11 a.m. followed by a shotgun start at noon. The extended cocktail reception takes place from 5 – 7 p.m. Corporate foursomes, sponsorships and individual players are being sought. For more information and to register, call ext. 5060 or visit <https://adobe.ly/3A0tdDI/>.

Women's Soccer

<u>Day</u>	<u>Date</u>	<u>Opponent</u>	<u>Time</u>
Sat	Sept. 24	Harcum	Noon
Tues	Oct. 4	RVCC	3:30pm
Thurs	Oct. 6	Essex	3:30pm
Tues	Oct. 11	Bergen	3:30pm

Men's Soccer

<u>Day</u>	<u>Date</u>	<u>Opponent</u>	<u>Time</u>
Wed	Aug. 24	Berkeley College	3:30pm
Sat	Sept. 17	Ocean	Noon
Thurs	Sept. 22	Middlesex	4pm
Thurs	Sept. 29	Atlantic Cape	4pm
Sat	Oct. 1	RCSJ Cumberland	1pm
Thurs	Oct. 13	Sussex	3:30pm

SOCIAL MEDIA

Help us communicate all of the good things happening at CCM by liking, sharing or commenting on the college's social media posts and pages.

