



July 14, 2023  
Volume 2023/709

### CCM EVENTS



[Public Safety Visitor's Registration Link](#)

### STUDENT SERVICES

The Library  
[In-Person and Remote Service](#)

Online Tutoring Center  
For more information, click [here](#).

### HR CORNER

RETIREMENT CONSULTATIONS WITH NEW JERSEY STATE APPROVED VENDORS  
Save for retirement –  
Receive free, no-pressure retirement counseling sessions. Make your appointment today. You do not need to be a member to speak with the representatives.

Corebridge Financial (formerly AIG/VALIC) representative MaryAnn Bradford is available for individual appointments. [Click here to schedule a virtual meeting or phone appointment](#)

Empower (formerly MassMutual/Hartford) representative Kenneth Quarnaccio is available for individual appointments, contact him at 848-248-4313 or by email at [kquarnaccio@gittermanwealth.com](mailto:kquarnaccio@gittermanwealth.com).

Empower (formerly Prudential) representative Raymond Allocco is available for individual appointments for the ABP or the DCRP plans, contact him at 973-908-9619 or by email at [Raymond.allocco@empower.com](mailto:Raymond.allocco@empower.com).

Equitable representative Marc Sheridan is available for individual appointments, contact him at 908-230-2042 or by email at [Marc.Sheridan@equitable.com](mailto:Marc.Sheridan@equitable.com).

MetLife/Brighthouse representative David Sharpe is available for individual appointments, contact him at 973-575-3254 or by email at [dsharpe@financialguide.com](mailto:dsharpe@financialguide.com).

Contact the TIAA Individual Advisory Center to schedule an appointment with a TIAA representative at 855-728-8422 or [www.tiaa.org/schedulenow](http://www.tiaa.org/schedulenow).

Voya Financial Services representative John Murray is available for individual appointments, contact him at 609-234-3369 or by email [johnmurray@voyafa.com](mailto:johnmurray@voyafa.com).

### NOTICES FOR CCMEMO

Email material to Kathleen Brunet at [kbrunet@ccm.edu](mailto:kbrunet@ccm.edu) and Stacy Maldonado at [smaldonado@ccm.edu](mailto:smaldonado@ccm.edu).

Submissions must be received by 3 p.m. Wednesday.

Looking for past issues of the CCMemo?  
[Find them here.](#)



### New Students Arriving Soon

The CCM community is looking forward to having more students on campus soon. New students will be arriving starting this month for the New Student Orientation Program put on by the Office of Campus Life.

The first orientation took place this Thursday. And two more are scheduled for:

- Tuesday, August 8
- Thursday, August 24

Helping with the orientation are several past and current students who will be sharing their college experience with the new students through panel discussions and informal interactions.

Take some time to walk around campus to welcome our new students and to thank those past and current students who are helping!

The Fall Semester begins Thursday, August 31.

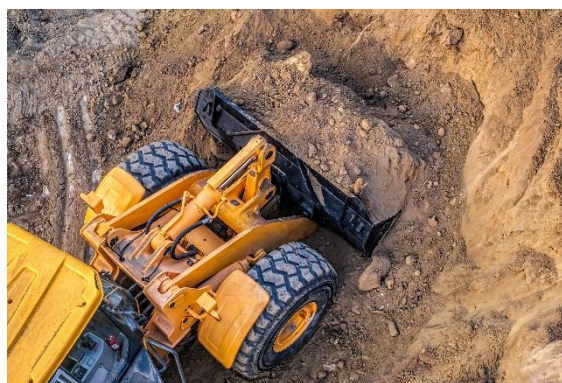
### Bear Sightings on Campus



It is normal to see some bear activity on campus this time of year. If you should encounter a bear on campus, follow these safety tips:

- Never approach or feed a bear.
- Never run from a bear. Slowly walk away and avoid making direct eye contact.

### Campus Construction Updates



#### Academic Complex Elevators and Third Floor Walkway:

Interior work has started on the first and second floors including demolition of the slab in preparation for the extended footings and base plates for the columns. In the next coming weeks, interior welding and hot work will be

- If cornered or you feel the need to take action, scare the bear away by making loud noises and making yourself look as big as possible by waving your arms above your head.

A full list of bear safety tips from the New Jersey Division of Fish & Wildlife can be found at <https://bit.ly/BearSafetyTipsNJ>.

Any bear sightings on campus should be reported to the Department of Public Safety at ext. 5550. For immediate safety concerns, call 9-1-1.

Stay safe!

## Office Relocations



Due to the construction taking part in and around the Academic Complex, several offices have been temporarily moved.

The TASC team, along with Dr. Pam Marcenaro, Assistant Vice President, Enrollment Management, are now located in SCC Room 221.

Those in the EOF office also have moved. Here is where each is located:

Executive Director of DEI and EOF Julian Gomez, HH 211A  
 Coordinator of DEI Ed Lopez, HH 109  
 Gene Moss, HH 109  
 Edie Nelson, SCC 122  
 Merlina Nunez, SCC 123

## Having Outlook Issues?

If you use the Outlook application installed on your computer, you may be experiencing slowness, especially for those individuals who access more than one email account.

Microsoft's roadmap for Outlook is to eventually match the web-based interface. Until a new version is released, these issues will remain, so Information Systems is suggesting that you start using the web-based client, which can be accessed at <https://outlook.office.com>.

There are some subtle differences in the web version. A quick introduction video can be found [here](#).

occurring. There will be intermittent noise and minor odors during this process. We have discovered some hidden conduits under, and within, the first-floor slabs that were not visible in the penetrating radar scans. When this happens, we might temporarily lose power or HVAC control in certain areas unexpectedly. As you would normally, please reach out to Plant & Maintenance ext. 5500 if you find you have a partial loss of power, or the HVAC system is not acting as you would normally expect. We have been able to restore systems relatively quickly, but the sooner Plant knows the sooner it can get things restored.

Public Safety and Plant are continuing to work daily on updating caution and detour signage as the work shifts within the buildings. If you have any concerns, please call Business & Finance at ext. 5012 and they will direct the questions or concerns to the correct department/person.

To keep informed of the construction progress throughout the summer, please check the CCMemo for regular updates. At the end of July/beginning of August, the college expects to have the crane operation occur. A more precise schedule for the crane operation will be provided over the next coming week(s). We again thank the campus community for your assistance with preparing for the summer construction schedule. As communicated over the last few years, the completed project will provide much-needed accessibility (ADA) access, to the third floors of Cohen, Sheffield, and DeMare halls with larger elevator cabs and a connection between the buildings' third floors. The third-floor connections will improve circulation and provide additional options for emergency egress. The old elevators and equipment rooms will be converted to fully ADA-compliant gender-neutral (all gender) single-stall restrooms and additional building storage. This project is funded through the college's Chapter 12 appropriation and was approved by Morris County.

### Existing sewer lift station (Randolph Township) at the Plant Maintenance Building

This work will provide a new sewer lift station, generator, landscaping, and a new set of lines to and from Route 10. The lift station serves CCM and a few buildings to the west along Route 10. CCM is the main beneficiary of the construction. The project will be completed in phases. Phase I will include constructing the new sewer lift station with an anticipated completion in August. Phase II will include the installation of the new generator which has a longer lead time and anticipated completion in spring 2024. This project is funded through the Township of Randolph.

## SOCIAL MEDIA

Help us communicate all of the good things happening at CCM by liking, sharing or commenting on the college's social media posts and pages.

