

Community College Survey on Student Engagement (CCSSE) History

- Established in 2001 through Community College Leadership Program at The University of Texas Austin
- Works in partnership with the National Survey on Student Engagement at Indiana University Center for Postsecondary Research and Planning

CCSSE Rationale

Student learning and retention correlated with student engagement

Involvement in Learning (1984)

Seven Principles for Good Practice in Undergraduate Education (1987, Chickering and Gamson)

- ✓ Encourages student-faculty contact
- ✓ Develops reciprocity and cooperation among students
- ✓ Encourages active learning
- ✓ Gives prompt feedback
- ✓ Emphasizes time on task
- ✓ Communicates high expectations
- ✓ Respects diverse talents and ways of knowing

How College Affects Students (1991, Pascarella and Terenzini)

“Students who are actively involved in both academic and out-of-class activities gain more from the college experience than those who are not so involved.”

Leaving College (1993 Tinto)

“Forces of contact and involvement that influence persistence also appear to share student learning...the more frequently they make contact with faculty other students about learning issues, especially outside the class, the more students are likely to learn.”

Sample CCSSE Survey Items

CCSSE Methodology

- ❖ Administered 2010 spring semester to 1,611 students in 70 randomly selected class sections
- ❖ 636 surveys were returned (39% response rate)
- ❖ Respondent demographics similar to CCM student demographics except in full-time and traditional age (overrepresented) and part-time and African American (underrepresented)

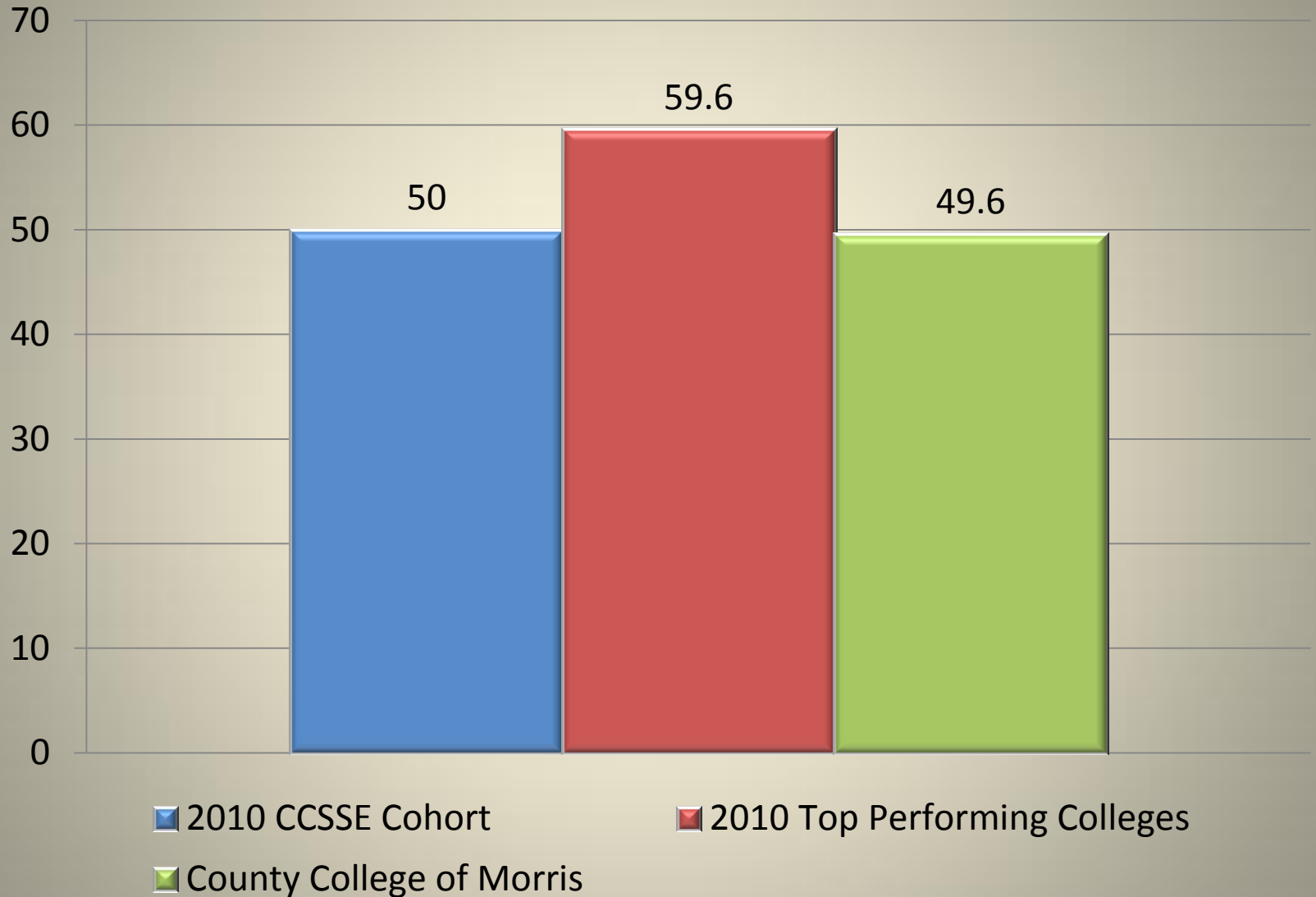
CCSSE Benchmarks

- ✓ Active and Collaborative Learning
- ✓ Student Effort
- ✓ Academic Challenge
- ✓ Student-Faculty Interaction
- ✓ Support for Learners

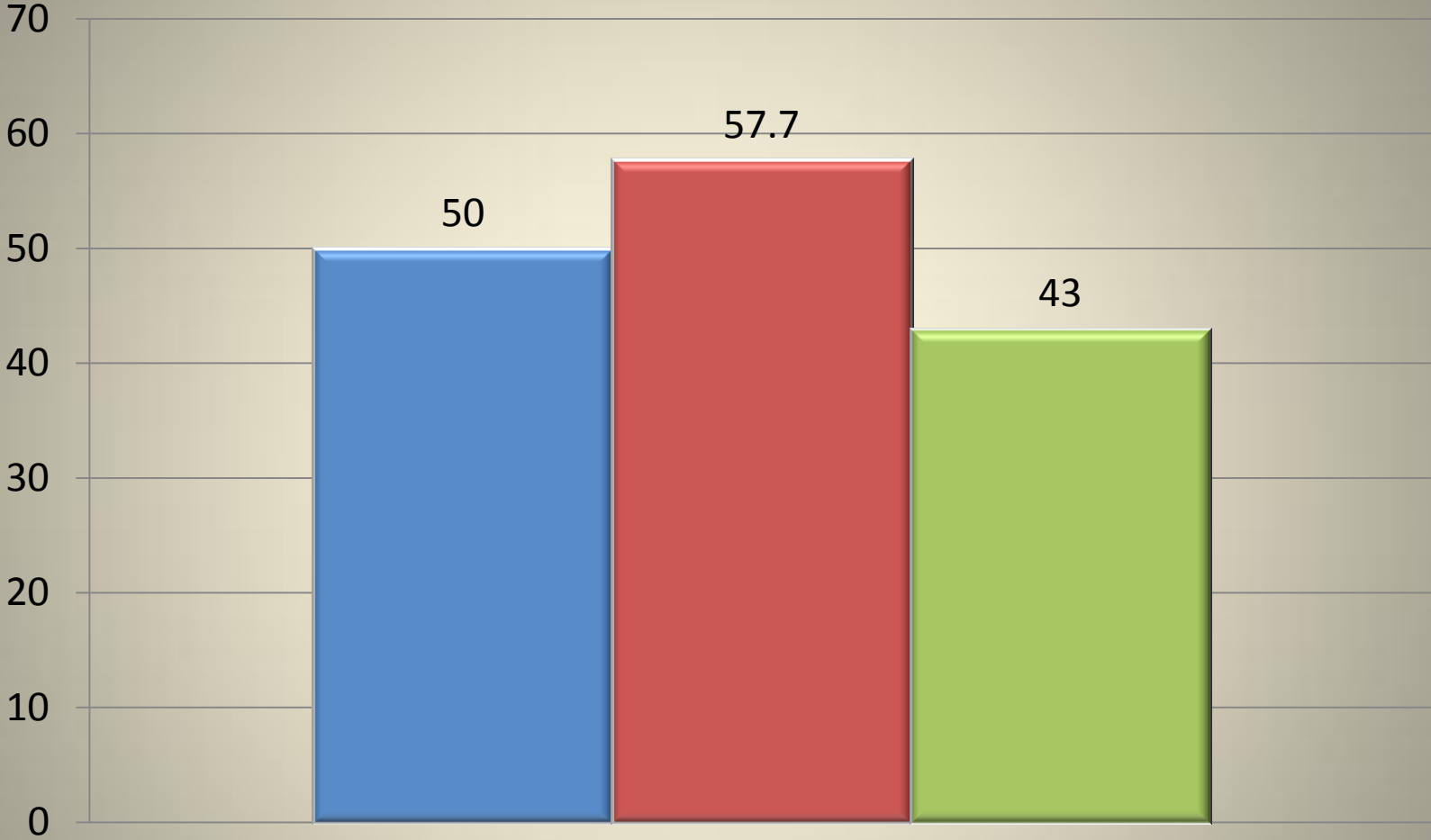
Benchmark and Survey Item Scores

- Standardized scores with $\mu=50$; $SD=25$
- Statistically significant differences ($p<.001$) on survey items

Active and Collaborative Learning Benchmark



Student Effort Benchmark

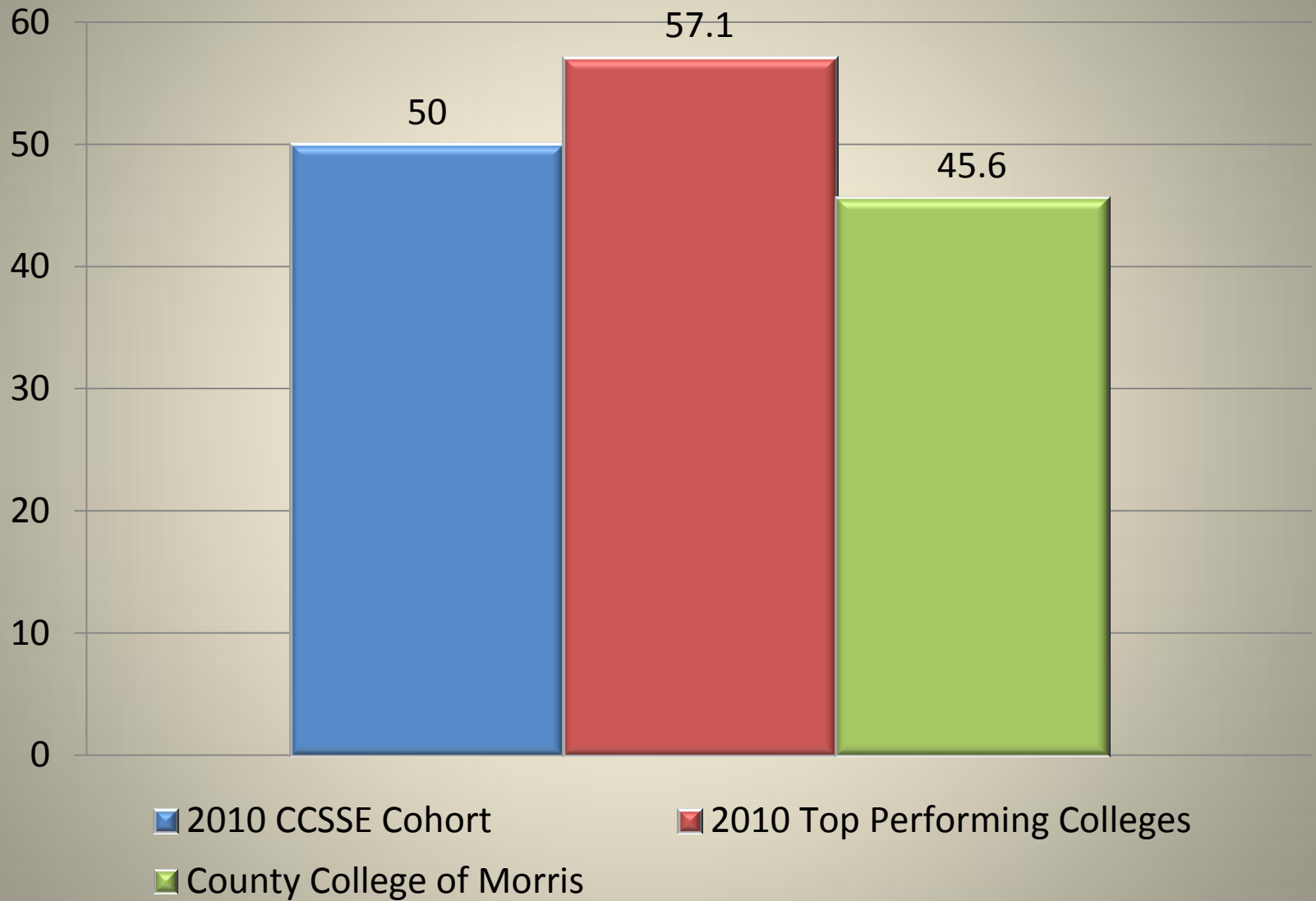


■ 2010 CCSSE Cohort

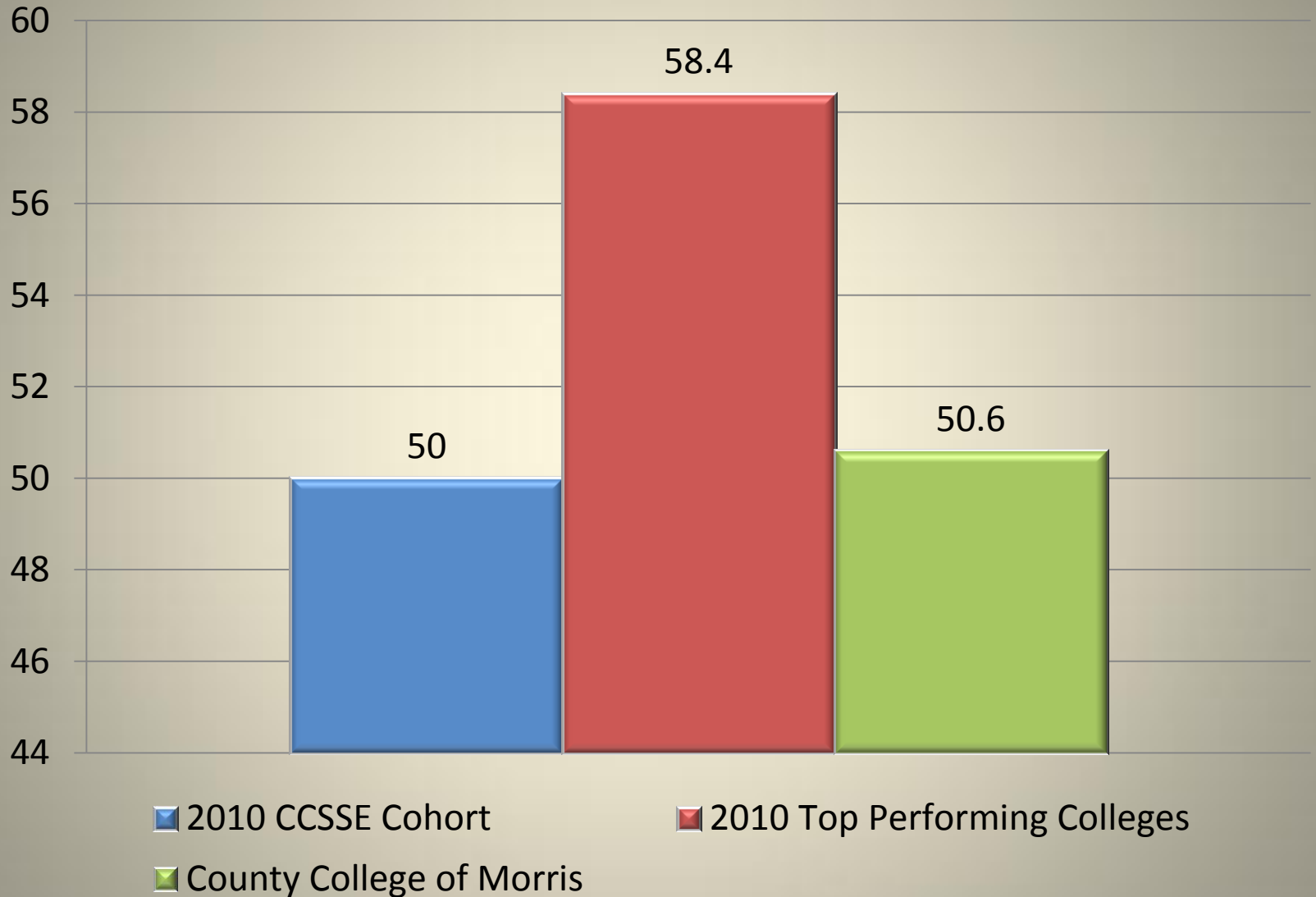
■ 2010 Top Performing Colleges

■ County College of Morris

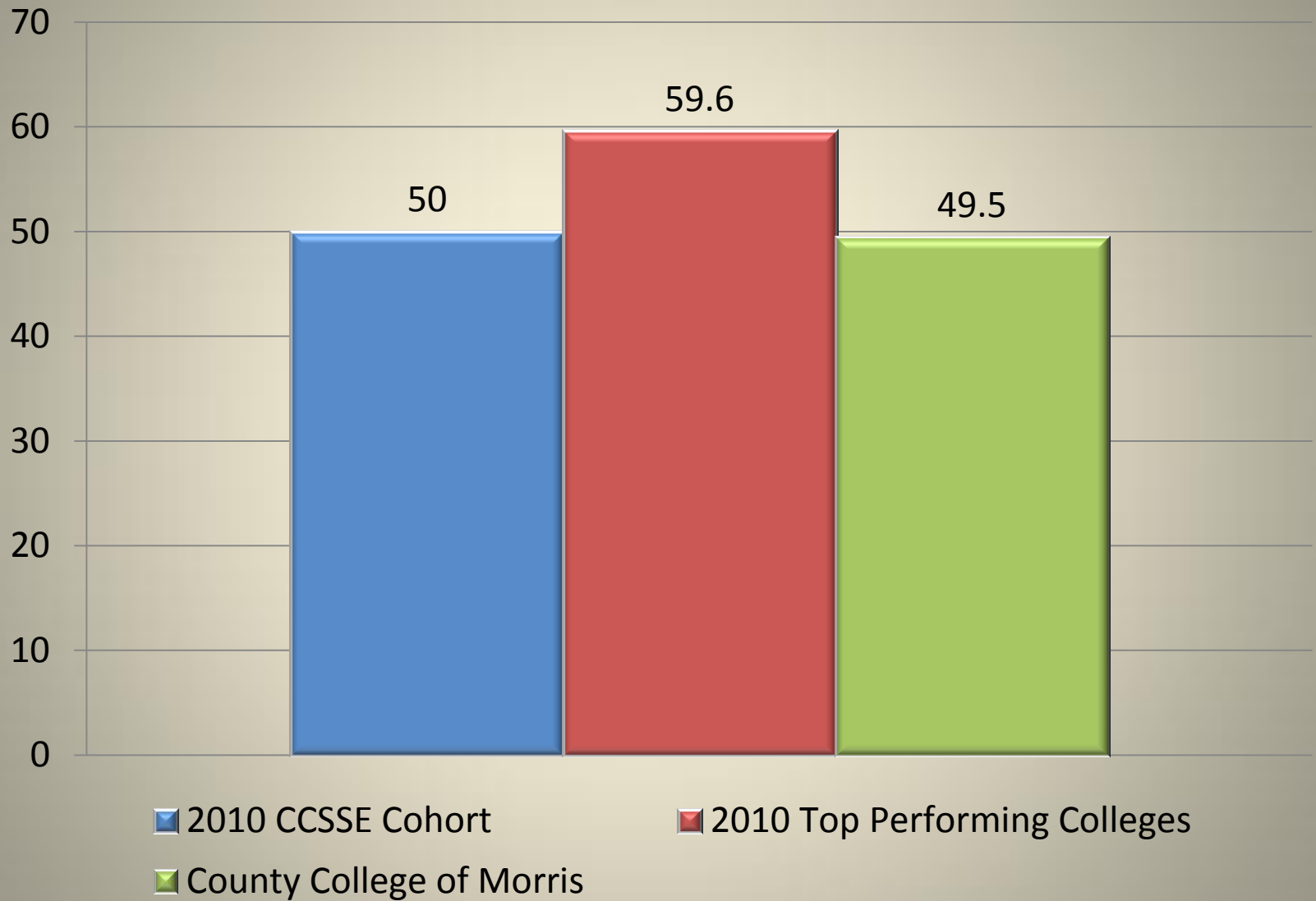
Academic Challenge



Student-Faculty Interaction



Support for Learners



Areas of Highest Student Engagement Part Time Students

Item Number	Benchmark	Item
4b	Active & Collaborative Learning	Made a class presentation
4n	Student-Faculty Interaction	Discussed ideas from your readings or classes with instructors outside of class
4q	Student-Faculty Interaction	Worked with instructors on activities other than coursework
6b	Student Effort	Number of books read on your own (not assigned) for personal enjoyment or academic enrichment
9d	Support for Learners	Helping you cope with your non-academic responsibilities (work, family, etc.)

Areas of Highest Student Engagement Full Time Students

Item Number	Benchmark	Item
13a1	Support for Learners	Frequency: Academic Advisement/Planning
4b	Active & Collaborative Learning	Made a class presentation
4m	Student-Faculty Interaction	Talked about career plans with an instructor or advisor
4n	Student-Faculty Interaction	Discussed ideas from your readings or classes with instructors outside of class
4q	Student –Faculty Interaction	Worked with instructors on activities other than coursework

Areas of Lowest Student Engagement Part Time Students

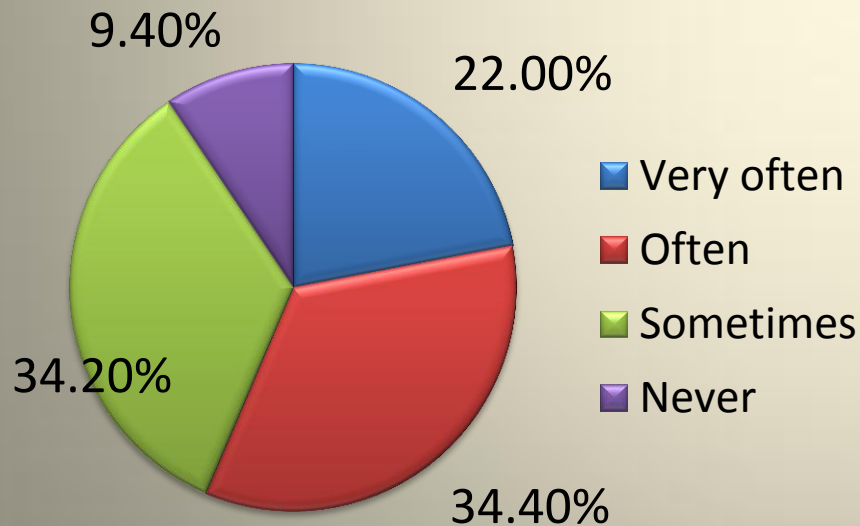
Item Number	Benchmark	Item
10a	Student Effort	Preparing for class (studying, reading, writing, rehearsing, doing homework or other activities related to your program)
13e1	Student Effort	Frequency: Skill labs (writing, math, etc.)
13h1	Student Effort	Frequency: Computer lab
4f	Active & Collaborative Learning	Worked with other students on projects during class
9a	Academic Challenge	Encouraging you to spend significant amounts of time studying

Areas of Lowest Student Engagement Full Time Students

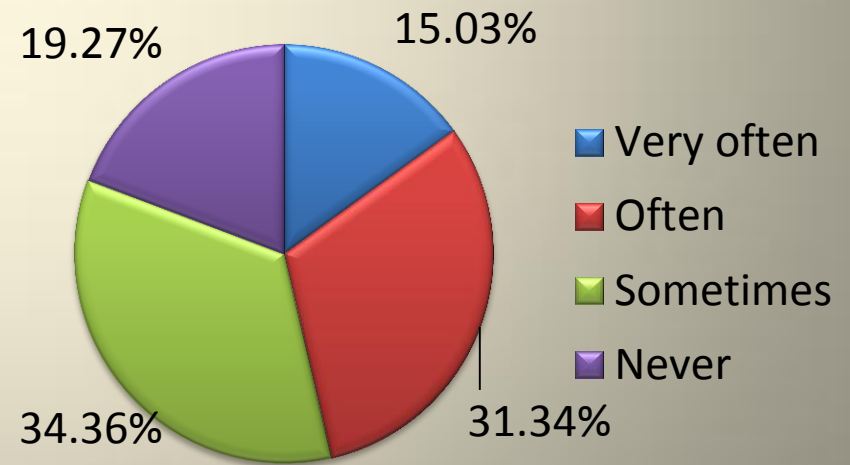
Item Number	Benchmark	Item
10a	Student Effort	Preparing for class (studying, reading, writing, rehearsing, doing homework or other activities related to your program)
13e1	Student Effort	Frequency: Skill labs (writing, math, etc.)
13h1	Student Effort	Frequency: Computer lab
4c	Student Effort	Prepared two or more drafts of a paper or assignment before turning it in
4f	Active & Collaborative Learning	Worked with other students on projects during class

Special-Focus Items

In your experience at this college during the current school year, about how often have you put together ideas or concepts from different courses when completing assignments or during class discussions?

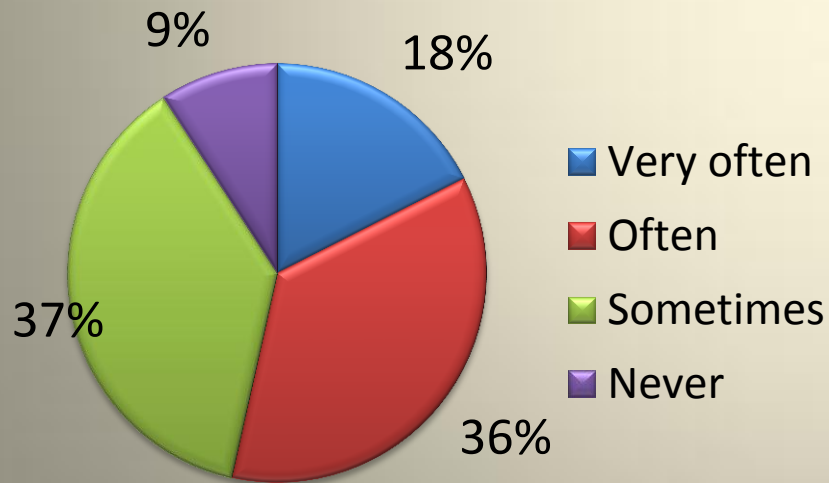


In your experience at this college during the current school year, about how often have you included diverse perspectives (different races, religions, genders, political beliefs, etc.) in class discussions or assignments?

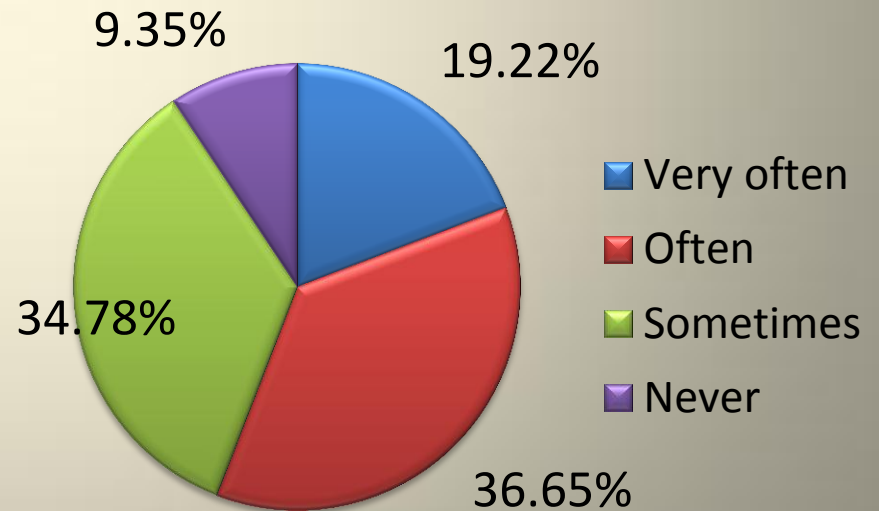


Special-Focus Items

In your experience at this college during the current school year, about how often have you examined the strengths and weaknesses of your own views on a topic or issue?



In your experience at this college during the current school year, about how often have you tried to better understand someone else's views by imagining how an issue looks from his or her perspective?



Special-Focus Items

In your experience at this college during the current school year, about how often have you learned something that changed your viewpoint about an issue or concept?

