

Community College Survey on Student Engagement (CCSSE) History

- Established in 2001 through Community College Leadership Program at The University of Texas Austin
- Works in partnership with the National Survey on Student Engagement at Indiana University Center for Postsecondary Research and Planning

CCSSE Rationale

Student learning and retention correlated with student engagement

Involvement in Learning (1984)

Seven Principles for Good Practice in Undergraduate Education (1987, Chickering and Gamson)

- ✓ Encourages student-faculty contact
- ✓ Develops reciprocity and cooperation among students
- ✓ Encourages active learning
- ✓ Gives prompt feedback
- ✓ Emphasizes time on task
- ✓ Communicates high expectations
- ✓ Respects diverse talents and ways of knowing

How College Affects Students (1991, Pascarella and Terenzini)

“Students who are actively involved in both academic and out-of-class activities gain more from the college experience than those who are not so involved.”

Leaving College (1993 Tinto)

“Forces of contact and involvement that influence persistence also appear to share student learning...the more frequently they make contact with faculty other students about learning issues, especially outside the class, the more students are likely to learn.”

CCSSE Methodology

- ❖ Administered 2010 spring semester to 1,611 students in 70 randomly selected class sections
- ❖ 636 surveys were returned (39% response rate)
- ❖ Respondent demographics similar to CCM student demographics except in full-time and traditional age (overrepresented) and part-time and African American (underrepresented)

Benchmark: ACTIVE & COLLABORATIVE LEARNING

4	In your experiences at this college during the current school year, about how often have you done each of the following:
	<i>1=never</i> <i>2=sometimes</i> <i>3=often</i> <i>4=Very often</i>
a.	Asked questions in class or contributed to class discussions
b.	Made a class presentation
f.	Worked with other students on projects during class
g.	Worked with classmates outside of class to prepare class assignments
h.	Tutored or taught other students (paid or voluntarily)
i.	Participated in a community-based project as a part of a regular course
r.	Discussed ideas from your readings or classes with others outside of class (students, family members, co-workers, etc.)

Benchmark: STUDENT EFFORT

4	In your experiences at this college during the current school year, about how often have you done each of the following: <i>1=never</i> <i>2=sometimes</i> <i>3=often</i> <i>4=Very often</i>
c.	Prepared two or more drafts of a paper or assignment before turning it in
d.	Worked on a paper or project that required integrating ideas or information from various sources
e.	Came to class without completing readings or assignments
6	During the current school year, about how much reading and writing have you done at this college <i>1=none</i> <i>2=between 1 & 4</i> <i>3=between 5&10</i> <i>4=between 11 & 20</i> <i>5=more than 20</i>
b.	Number of books read on your own (not assigned) for personal enjoyment or academic enrichment

Benchmark: STUDENT EFFORT (cont'd)

10	<p>About how many hours do you spend in a typical 7-day week doing each of the following:</p> <p><i>0=none</i> <i>1=1-5 hours</i> <i>2=6-10 hours</i> <i>3=11-20 hours</i> <i>4=21-30 hours</i> <i>5=more than 20</i></p>
a.	Preparing for class (studying, reading, writing, rehearsing, doing homework, or other activities related to your program)
13.1	<p>How often you use the following services:</p> <p><i>1=rarely/never</i> <i>2=sometimes</i> <i>3=often</i></p>
d.	Frequency: Peer or other tutoring
e.	Frequency: Skill labs (writing, math, etc.)
h.	Frequency: Computer lab

Benchmark: ACADEMIC CHALLENGE

4 In your experiences at this college during the current school year, about how often have you done each of the following:

1=never

2=sometimes

3=often

4=very often

p. Worked harder than you thought you could to meet an instructor's standards or expectations

5 During the current school year, how much has your coursework at this college emphasized the following mental activities:

1=very little

2=some

3=quite a bit

4=very much

b. Analyzing the basic elements of an idea, experience, or theory

c. Synthesizing and organizing ideas, information, or experiences in new ways

d. Making judgments about the value or soundness of information, arguments, or methods

e. Applying theories or concepts to practical problems or in new situations

f. Using information you have read or heard to perform a new skill

Benchmark: ACADEMIC CHALLENGE (cont'd)

6 During the current school year, about how much reading and writing have you done at this college:

1=none

2=between 1&4

3=between 5&10

4=between 11&20

5=more than 20

a. Number of assigned textbooks, manuals, books, or book-length packs of course readings

c. Number of written papers or reports of any length

7 Mark the box that best represents the extent to which your examinations during the current school year have challenged you to do your best work at this college:

1=extremely easy7=extremely challenging

9 How much does this college emphasize each of the following:

1=very little

2=some

3=quite a bit

4=very much

a. Encouraging you to spend significant amounts of time studying

Benchmark: STUDENT-FACULTY INTERACTION

4 In your experiences at this college during the current school year, about how often have you done each of the following:

1=never

2=sometimes

3=often

4=very often

k. Used email to communicate with an instructor

l. Discussed grades or assignments with an instructor

m. Talked about career plans with an instructor or advisor

n. Discussed ideas from your readings or classes with instructors outside of class

o. Received prompt feedback (written or oral) from instructors on your performance

q. Worked with instructors on activities other than coursework

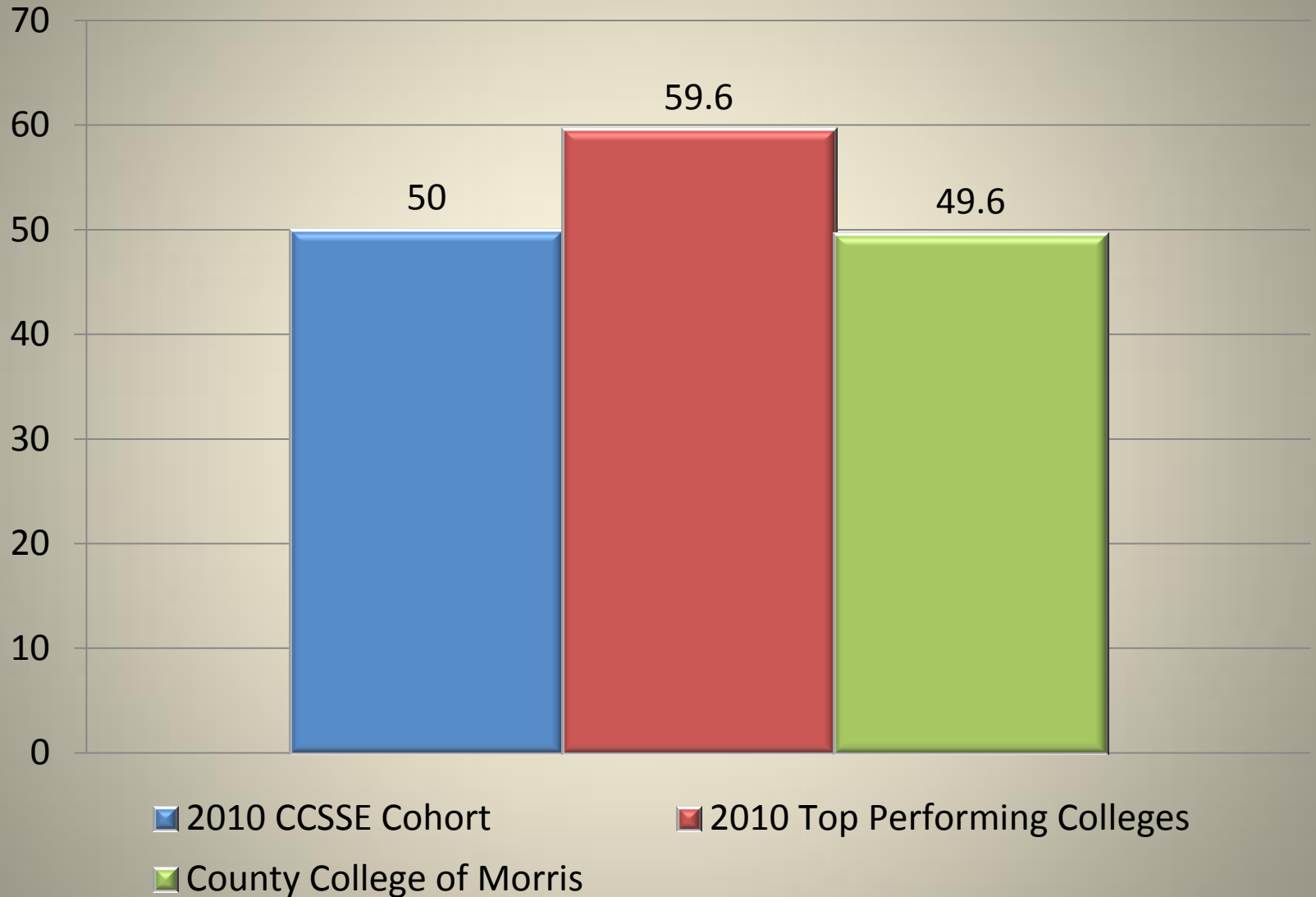
Benchmark: SUPPORT FOR LEARNERS

9	How much does this college emphasize each of the following: <i>1=very little</i> <i>2=some</i> <i>3=quite a bit</i> <i>4=very much</i>
b.	Providing the support you need to help you succeed at this college
c.	Encouraging contact among students from different economic, social, and racial or ethnic backgrounds
d.	Helping you cope with your non-academic responsibilities (work, family, etc.)
e.	Providing the financial support you need to thrive socially
f.	Providing the financial support you need to afford your education
13.1	How often you use the following services: <i>1=rarely/never</i> <i>2=sometimes</i> <i>3=often</i>
a.	Frequency: Academic advising/planning
b.	Frequency: Career counseling

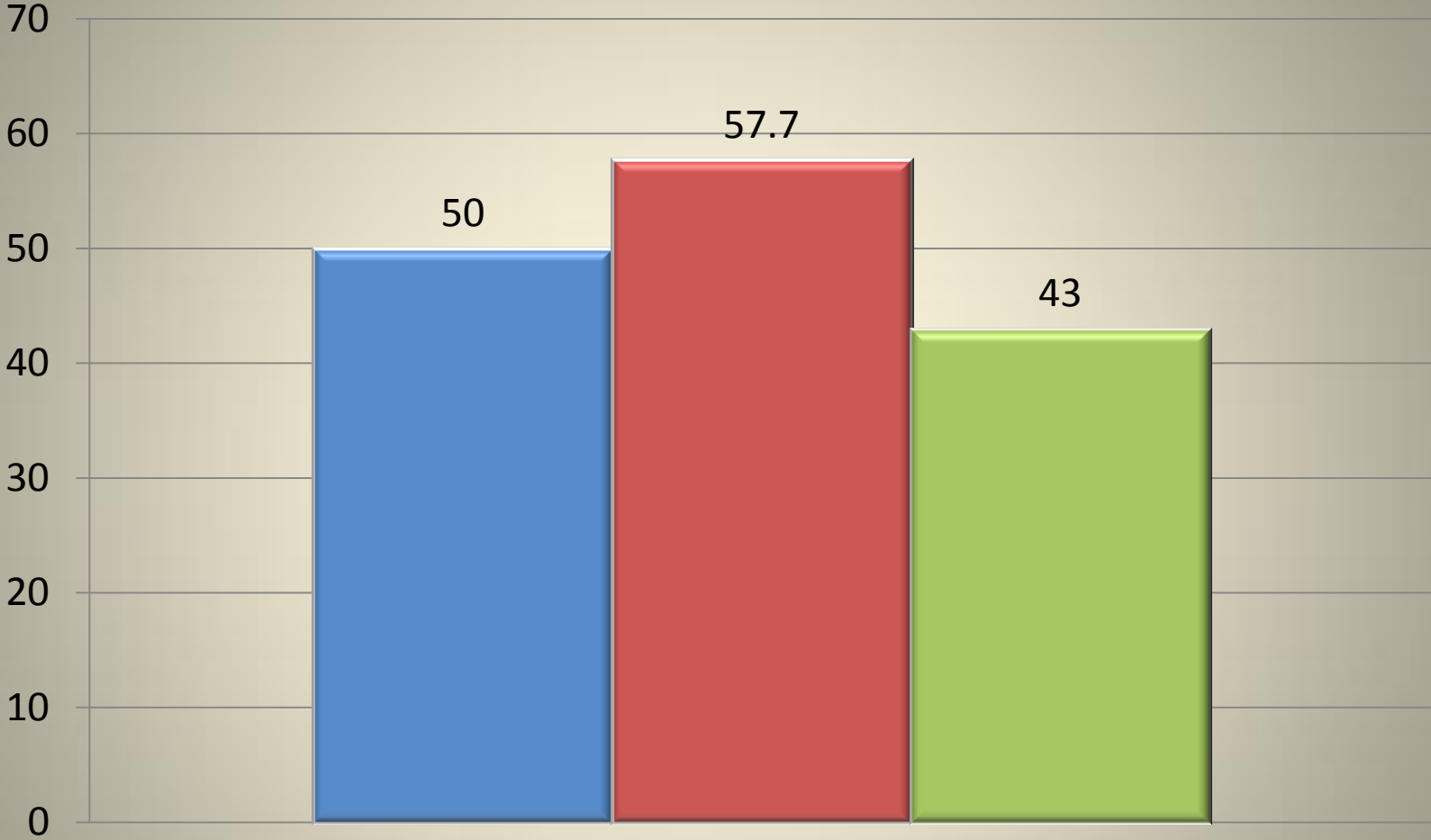
Benchmark and Survey Item Scores

- Standardized scores with $\mu=50$; $SD=25$
- Statistically significant differences ($p<.001$) on survey items

Active and Collaborative Learning Benchmark



Student Effort Benchmark

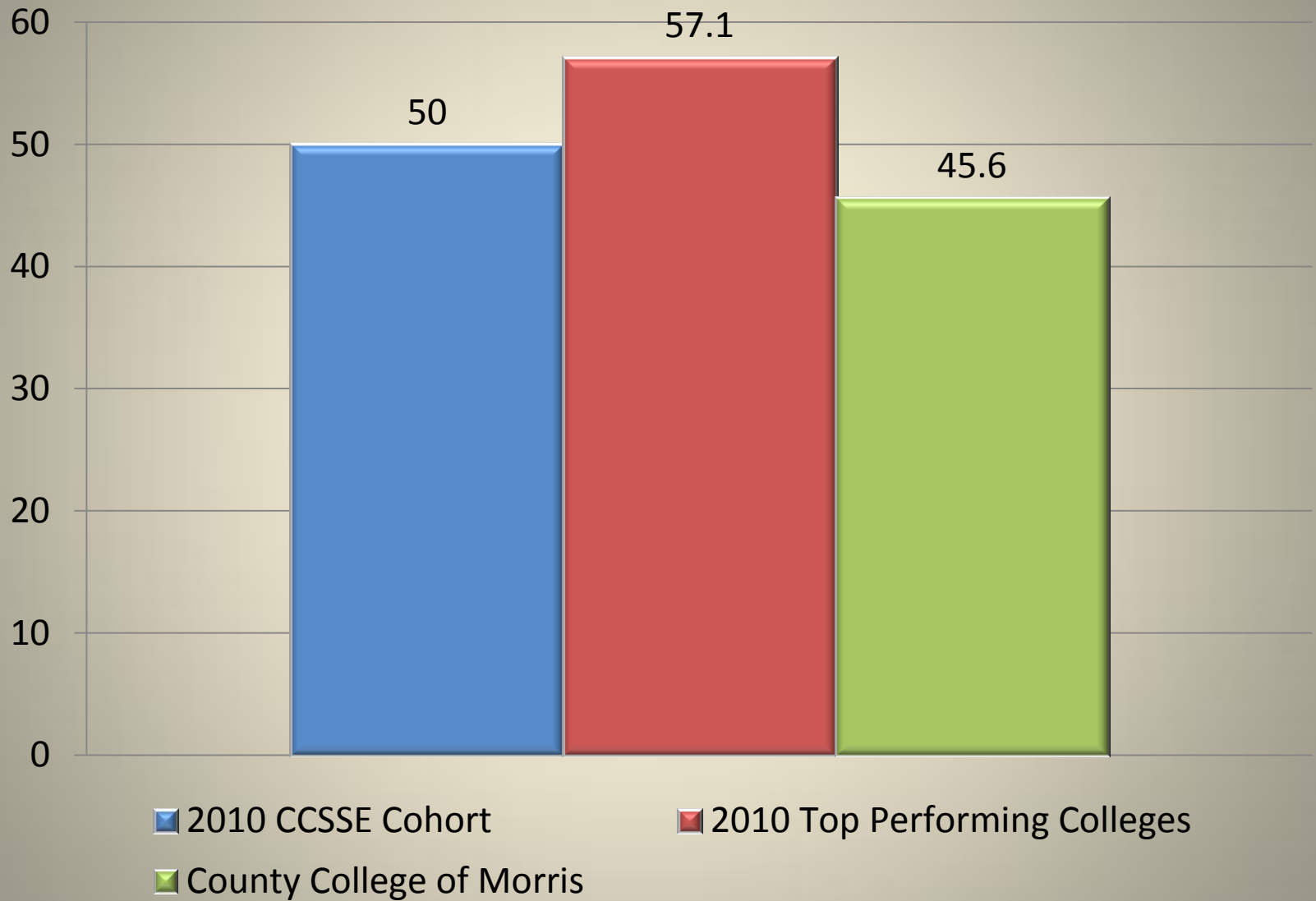


2010 CCSSE Cohort

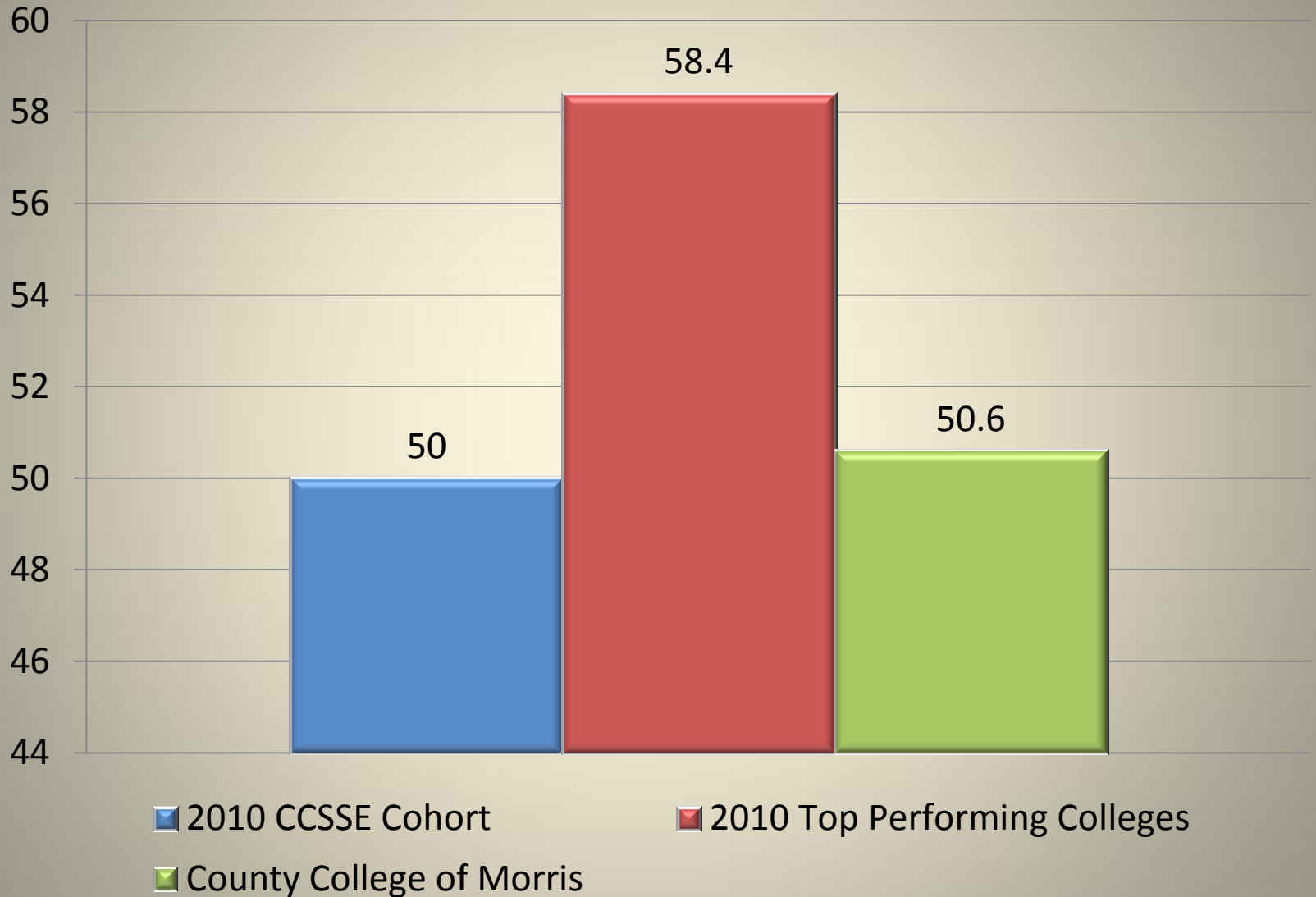
2010 Top Performing Colleges

County College of Morris

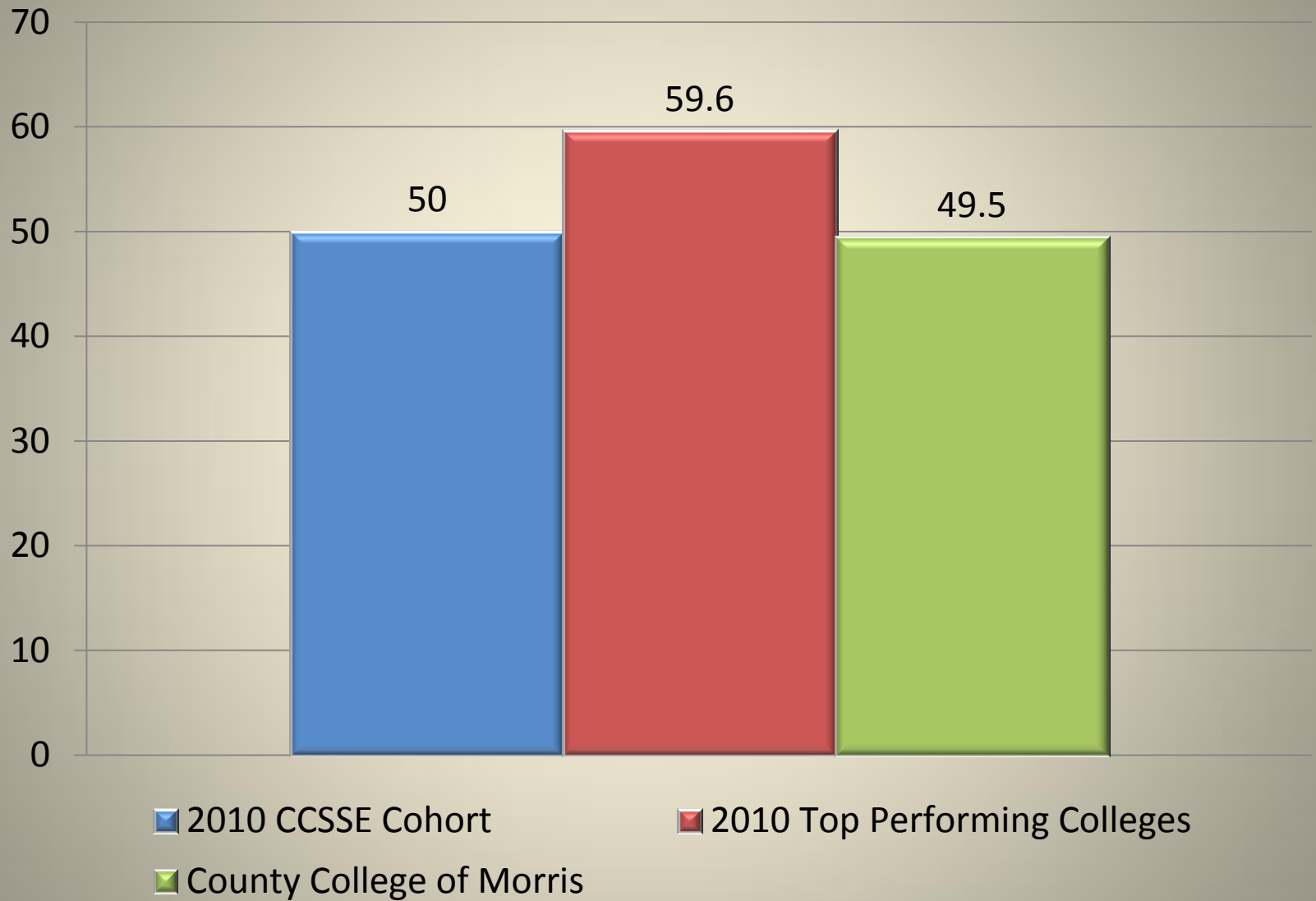
Academic Challenge



Student-Faculty Interaction



Support for Learners



Areas of Highest Student Engagement Part Time Students

Item Number	Benchmark	Item
4b	Active & Collaborative Learning	Made a class presentation
4n	Student-Faculty Interaction	Discussed ideas from your readings or classes with instructors outside of class
4q	Student-Faculty Interaction	Worked with instructors on activities other than coursework
6b	Student Effort	Number of books read on your own (not assigned) for personal enjoyment or academic enrichment
9d	Support for Learners	Helping you cope with your non-academic responsibilities (work, family, etc.)

Areas of Highest Student Engagement Full Time Students

Item Number	Benchmark	Item
13a1	Support for Learners	Frequency: Academic Advisement/Planning
4b	Active & Collaborative Learning	Made a class presentation
4m	Student-Faculty Interaction	Talked about career plans with an instructor or advisor
4n	Student-Faculty Interaction	Discussed ideas from your readings or classes with instructors outside of class
4q	Student –Faculty Interaction	Worked with instructors on activities other than coursework

Areas of Lowest Student Engagement Part Time Students

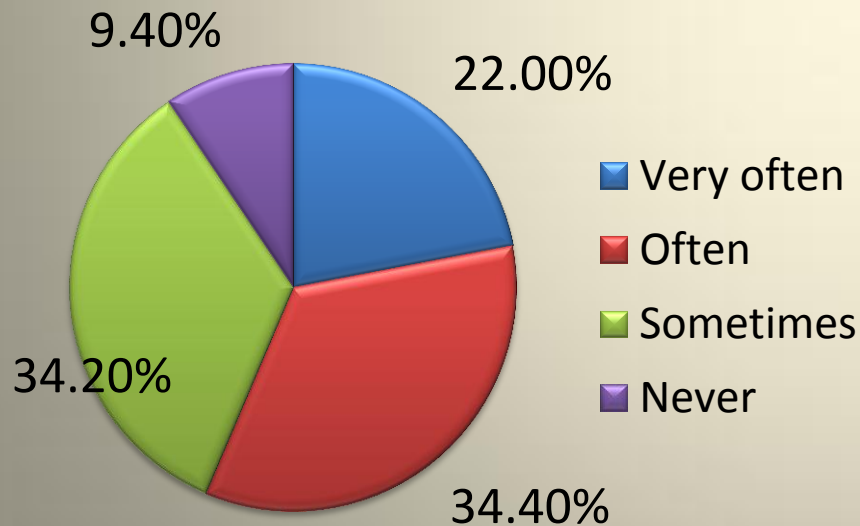
Item Number	Benchmark	Item
10a	Student Effort	Preparing for class (studying, reading, writing, rehearsing, doing homework or other activities related to your program)
13e1	Student Effort	Frequency: Skill labs (writing, math, etc.)
13h1	Student Effort	Frequency: Computer lab
4f	Active & Collaborative Learning	Worked with other students on projects during class
9a	Academic Challenge	Encouraging you to spend significant amounts of time studying

Areas of Lowest Student Engagement Full Time Students

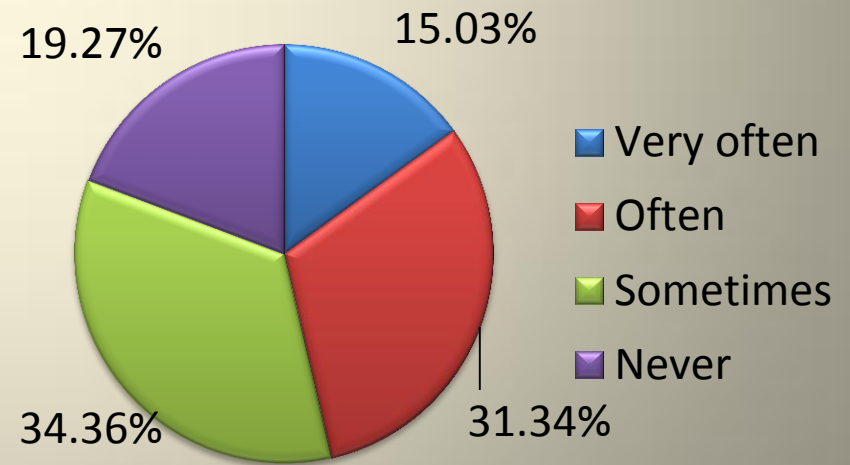
Item Number	Benchmark	Item
10a	Student Effort	Preparing for class (studying, reading, writing, rehearsing, doing homework or other activities related to your program)
13e1	Student Effort	Frequency: Skill labs (writing, math, etc.)
13h1	Student Effort	Frequency: Computer lab
4c	Student Effort	Prepared two or more drafts of a paper or assignment before turning it in
4f	Active & Collaborative Learning	Worked with other students on projects during class

Special-Focus Items

In your experience at this college during the current school year, about how often have you put together ideas or concepts from different courses when completing assignments or during class discussions?

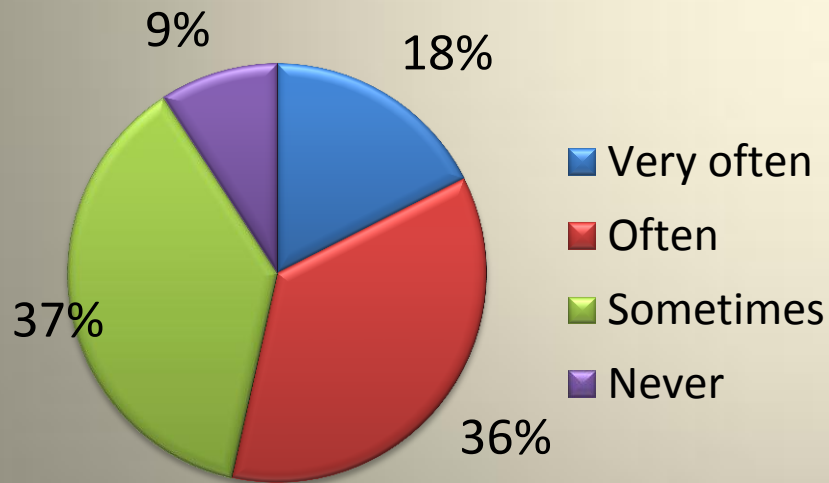


In your experience at this college during the current school year, about how often have you included diverse perspectives (different races, religions, genders, political beliefs, etc.) in class discussions or assignments?

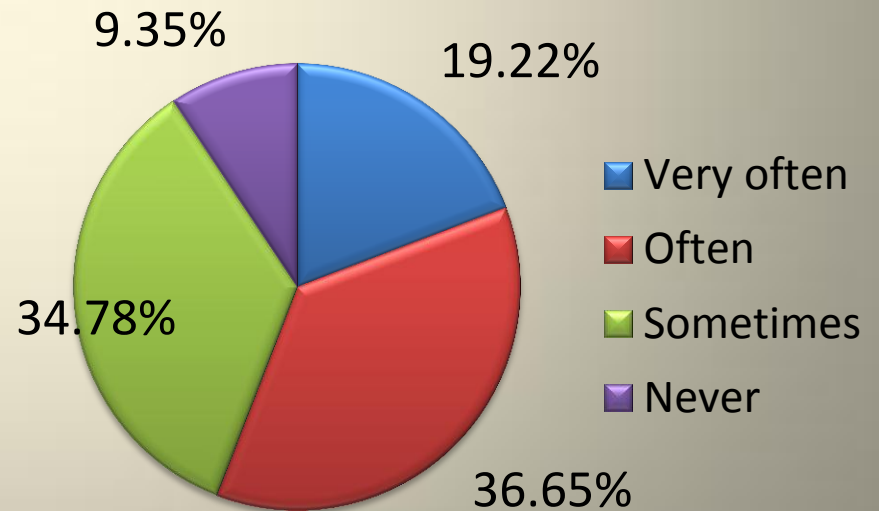


Special-Focus Items

In your experience at this college during the current school year, about how often have you examined the strengths and weaknesses of your own views on a topic or issue?



In your experience at this college during the current school year, about how often have you tried to better understand someone else's views by imagining how an issue looks from his or her perspective?



Special-Focus Items

In your experience at this college during the current school year, about how often have you learned something that changed your viewpoint about an issue or concept?

